

# Surface Mount

(iineo II)

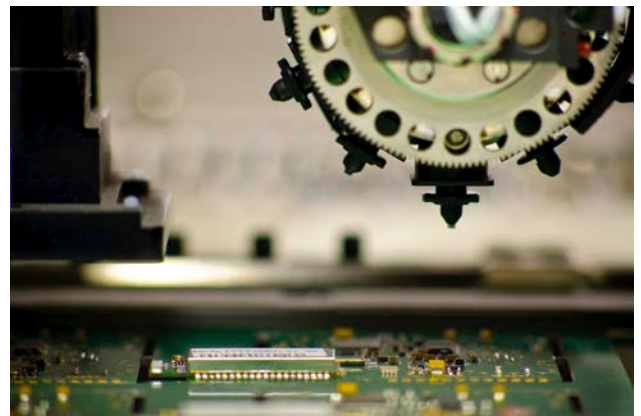
CT Production's surface mount capability is among the most advanced available in the UK electronics manufacturing services industry.

We have a long history of using Europlacer SMT placement machines and consistently achieve high quality results, coupled with high reliability, flexibility and excellent support.

The line-up currently includes two iineo II machines and a Finesse. The machines are widely configurable and feature major advantages over other machines, such as extremely high feeder count, large board size and wide component range with high accuracy. Because our surface mount lines are identical, we have interchangeable feeders and programmes, resulting in greater flexibility and consistency.

Each iineo II features:

- 30,000 components per hour on 2 tornado turret heads with 8 & 12 nozzles
- component accuracy 35µm down to 01005 and up to 50x50mm<sup>2</sup>
- 'on the fly' high definition vision for fine pitch QFP, QFN, uBGA
- 264 8mm intelligent feeders with fast off-line set-up
- large board capacity to 500 x 460mm



Supporting these machines, we have industry leading equipment including: Speedprint solder paste printers with vision alignment and 2D vision inspection for accurate results every time.

Excellent solder reflow is achieved with BTU 7 zone ovens, which are heat profiled to achieve the correct temperature for each product.

Mirtec AOI, and X-tek Xray which are used for inspecting populated SMT boards, hence providing confirmation of the build quality.

Combining these capabilities with the skills of our workforce, enables us to tackle the most complex surface mount projects with complete confidence and excellent results.

